

2010 DELAWARE STATE TRAPSHOOTING CHAMPIONSHIP

(107th Annual)

Sponsored by
Delaware Trapshooting Association Inc.
(website: www.dtatrap.org)

Hosted by
Millington Sportsman's Association
609 Glanding Rd. Millington MD 21651

May 28, 29, 30, 31, 2010

Start Times: May 28 @ 0900; May 29, 30 & 31 @ 0830
Cashier Window opens @ 0730 each day



14 Event Traps -- 3 Practice Traps
Presquadding (no fee) available and recommended through **PreSquad.com**

183 Trophies

26 A.T.A.

41 Delaware

116 Open

OUR SPONSORS

JOHN BURKE, D.D.S.
General Dentistry
CHRIS BARAN, D.M.D.
302-995-7128
Pike Creek Sports Medicine & Professional Center
3105 Limestone Road ~ Wilmington, DE 19808


WHEN WE SAY PULL,  **WE MEAN PULL !** 

DEER CROSSING FARM
1297 Bunker Hill Road
Middletown, DE 19709
Bill Alfree, Proprietor
302-378-9828


RESIDENTIAL COMMERCIAL INDUSTRIAL
SALES, SERVICE & INSTALLATION

DELAWARE VALLEY DOOR, INC.
Overhead & Rolling Steel Doors
Electric Operators


Newark, DE 19711 **BOB BLANCO**
(302) 366-8371


97 West Jackson Avenue
New Castle, DE 19720
302-328-9747
<http://www.millersguns.com>

Smyrna Sporting Goods

 Guns Bought, Sold, and Traded
Everything for the Hunter
Scopes Mounted

4 S. Main St. (302) 653-7073
Smyrna, DE 19977 Brian Brown, *Proprietor*


SHURELINE
ELECTRICAL

Karl Segner
Senior Project Manager

phone: 302.636.0295
Ext. 11
fax: 302.636.0207
cell: 302.420.3495
email: ksegner@shure-line.com
100 Artisan Drive
Smyrna, DE 19977
ShureLineElectrical.com

SPALLCO Selling quality
VEHICLE SALES RV's, for years
(302) 368-5950 of enjoyment!

Visit www.spallcosales.com for all of our listings



www.spallcorentals.com

 **X-Ring Supply LLC**

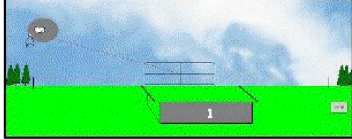
We Buy, Sell, Trade & Transfer
Tactical Firearms
Handgun Specialists
Dillon Reloading Supplies
Military Surplus

www.X-RingSupply.com (302) 737-6575
2201 Ogletown Road Newark, DE 19711
Hours: Mon - Fri: 10 - 7, Sat: 10 - 6
Email: Sales@X-RingSupply.com


TILDEN TROPHIES
1-800-350-3315



TRAPTUTOR
www.traptutor.com



The Virtual Clinic
Stop practicing mistakes and bad habits!

TrapTutor is serious tool
that can improve your score!

EVENT NO. 1
Friday May 28, 2010
Diamond State Handicap

100 Handicap Targets

Targets.....\$26.00

OPTIONS

Modified Lewis- 35% divided top 2 scores 60/40%. 3 classes (65%),
one money each class.....\$20.00
50's Option – 60/40 percentage \$5.00 each 50 first, middle and last.....\$15.00
Purse – 40/30/20/10 percentage.....\$20.00

TROPHIES

Open Champion and Runner Up
Open Champion each yardage group
18-21 22-23 24-25 26-27
Open Lady, Open Veteran and Open Junior
(1st half of 200 Handicap trophy see event 3)

EVENT NO. 2
Friday May 28, 2010
First State Singles

100 Singles Targets
Five Classes AA A B C D

Targets.....\$26.00

OPTIONS

Modified Lewis – 35% divided top 2 scores 60/40%. 3 classes (65%),
one money each class.....\$20.00
Class Purse- 5 Classes- Each class shooting for it's own money.
One money each 5 entries or major fraction\$15.00
Purse- 50/30/20 percentage.....\$20.00

TROPHIES

Open Champion
Open Champion each class
Open Lady, Open Veteran and Open Junior

EVENT NO. 3
Friday May 28, 2010
James “Duke” Naylor
Memorial Handicap

100 Handicap Targets

Targets.....\$26.00

OPTIONS

Modified Lewis- 35% divided top 2 scores 60/40%. 3 classes (65%),
one money each class.....\$20.00
50's Option – 60/40 percentage \$5.00 each 50 first, middle and last.....\$15.00
Purse – 40/30/20/10 percentage.....\$20.00

TROPHIES

Open Champion
Open Champion each yardage group
18-21 22-23 24-25 26-27
Open Lady, Open Veteran and Open Junior
Champion 200 Handicap (event 1 & 3)

EVENT NO. 4
Friday May 28, 2010
BLUE HEN DOUBLES

Note: Blue Hen Doubles will be conducted on a dedicated Bank and may be shot anytime during this preliminary day, however, no squads/shooters will start after 3:00 PM. Please schedule accordingly.

50 Pair Doubles Targets
Five (5) Classes AA A B C D

Targets.....\$26.00

OPTIONS

Modified Lewis – 35% divided top 2 scores 60/40%. 3 classes (65%), One
money each class.....\$20.00
50's Option - \$10.00 each 50 first and last 50/30/20 percentage.....\$20.00
Purse - 40/30/20/10 percentage.....\$20.00

TROPHIES

Open Champion
Open Champion each class
Open Lady, Open Veteran and Open Junior

EVENT NO. 5
Saturday, May 29, 2010 (8:30 A.M.)
DELAWARE DOUBLES CLASS CHAMPIONSHIP

50 Pair Doubles Targets
Five (5) Classes AA A B C D

Targets.....\$26.00

OPTIONS

Modified Lewis – 35% divided top 2 scores 60/40%. 3 classes (65%),
one money each class.....\$20.00
Class Purse – 5 classes each shooting for its own money. One money
each 5 entries or major fraction\$20.00
50's Option - \$10.00 each 50 first and last 50/30/20 percentage.....\$20.00
Purse – 40/30/20/10 percentage \$20.00

TROPHIES

ATA Resident Champion each class
Open Champion each class
Open Lady, Open Veteran, Open Senior Veteran,
Open Junior and Open Sub-junior

EVENT NO. 6
Saturday May 29, 2010
DELAWARE PRELIMINARY HANDICAP

100 Handicap Targets

Targets.....\$26.00

OPTIONS

Modified Lewis – 35% divided top 2 scores 60/40%, (65%) 4 Lewis classes
divided one money each class.....\$20.00
Yardage Purse- Each yardage group shoots for its own money, One
money each five entries or major fraction\$20.00
25's Option – 60/40 percentage \$5.00 each 25\$20.00
50's Option – 60/40 percentage \$8.00 each 50 first middle and last.....\$24.00
Purse - 40/30/20/10 percentage.....\$20.00

TROPHIES

Resident Champion
Resident Champion each yardage group
18-21 22-23 24-25 26-27
Open Champion
Open Champion each yardage group
18-21 22-23 24-25 26-27
Open Lady, Open Veteran, Open Senior Veteran, Open Junior and Open Sub-junior

EVENT NO. 7
Saturday May 29, 2010
DELAWARE SINGLES CLASS CHAMPIONSHIP
100 Singles Targets
Five (5) Classes AA A B C D

Targets.....\$26.00

OPTIONS

Modified Lewis – 35% divided top 2 scores 60/40%, (65%) 4 Lewis classes,
one money each class.....\$20.00
Class Purse- 5 Classes- Each class shooting for it's own money.
One money each 5 entries or major fraction\$20.00
Purse- 50/30/20 percentage.....\$20.00

TROPHIES

ATA Resident Champion each class
Open Champion each class
Open Lady, Open Veteran, Senior Veteran, Open Junior and Open Sub-junior

EVENT NO. 8
Sunday, May 30, 2010 (8:30 A.M.)
MICHAEL WHITEHEAD SINGLES CHAMPIONSHIP
200 SINGLES TARGETS
Five Classes AA A B C D

Targets.....\$52.00

OPTIONS

Modified Lewis – total 200, 35% Divide top 2 scores 60/40%, (65%)
5 Lewis classes, one money each class\$20.00
Modified Lewis – \$10.00 each 100, 35% divided top 2 scores 60/40%,
(65%) 5 Lewis classes, one money each class.....\$20.00
Class Purse – 5 classes shooting for it's own money, one money each
five entries or major fraction\$20.00
ATA Hall of Fame Lewis – Straight Lewis, 50 percent to shooter, 3 classes,
50/30/20%\$20.00
200 Purse – 40/30/20/10 percentage.....\$20.00

TROPHIES

ATA Resident Champion and Runner-up
ATA Resident Champion each category
Lady, Veteran, Senior Veteran, Junior and Sub-junior
Resident Champion each class
Open Champion
Open Champion each class
Open Champion each category
Lady , Veteran, Senior Veteran, Junior and Sub-Junior
ATA Hall of Fame Contribution Trophy

EVENT NO. 9
Monday, May 31, 2010 (8:30 A.M.)
WALTER MARVEL DOUBLES CHAMPIONSHIP

50 PAIR DOUBLES TARGETS
Five (5) Classes AA A B C D

Targets.....\$26.00

OPTIONS

Modified Lewis –35% divided top 2 scores 60/40%, (65%) 3 Lewis
classes, one money each class\$20.00
Class Purse - 5 classes each shooting for its own money, One money each
five shooters or major fraction\$20.00
50's Option - \$10.00 each 50 first and last 50/30/20 percentage.....\$20.00
Purse – 40/30/20/10 percentage.....\$20.00

TROPHIES

ATA Champion and Runner-up
Resident Champion each class
Resident Champion each category
Lady, Veteran, Senior Veteran, Junior and Sub-junior
Open Champion
Open Champion each class
Open Champion each category
Lady, Veteran, Senior Veteran, Junior and Sub-junior

EVENT NO. 10
Monday May 31, 2010
MICHAEL SHARKEY HANDICAP CHAMPIONSHIP

100 Handicap Targets

Targets.....\$26.00

OPTIONS

Modified Lewis – 35% divided top 2 scores 60/40%, (65%) 5 Lewis classes, one money each class.....\$20.00

Yardage Purse Each yardage group shooting for its own money., One money each 5 entries or major fraction.\$20.00

50's Option - 50/30/20 percentage \$10.00 each 50 first, middle and last.....\$30.00

Delaware Hall of Fame Lewis, Straight Lewis, 50 percent to shooter, 3 classes, 50/30/20%.....\$20.00

Great Eastern Purse - 25/15/10/25/15/10 percentage..... \$25.00

Purse - 40/30/20/10 percentage.....\$20.00

High Gun Purse – one money ties divide \$5.00

Special Number Drawing for Vandalia Silver Belt Buckle Shootoff Free
(see next page for details)

TROPHIES

- ATA Resident Champion and Runner-up
- ATA Resident 3rd - 6th Place
- Resident Champion each yardage group
18-21 22-23 24-25 26-27
- Resident Champion each category
Lady, Veteran, Senior Veteran, Junior and Sub-junior
- Open Champion
- Open Champion each yardage group
18-21 22-23 24-25 26-27
- Open Champion each category
Lady, Veteran, Senior Veteran, Junior and Sub-junior
- Open Winner of the Delaware Hall of Fame Option
- Special Number Shootoff: Vandalia Silver Belt Buckle



Delaware's 2005 Vandalia Silver Belt Buckle Shoot-Out

All Delaware shooter's entered in Event # 10 will be eligible (rules listed below) to shoot-off for this "One of a Kind" belt buckle commemorating the end of the Grand American Tournament in Vandalia, Ohio.

Lou Goodwin, of Maryland, graciously donated this unique buckle to the Delaware Trapshooting Association. His request is that a Delaware trapshooter at the 2010 Delaware State Shoot win this buckle.

Entry & Shoot-off rules:

Individual shooters must be entered and participate in (and complete) Event #10, the Delaware Handicap Championship on Monday, May 31, 2010.

Entrant must meet all target requirements for the shoot, as stated in the program, prior to the event.

Shooters with insufficient handicap targets who choose to shoot "targets only" are not eligible.

Upon completion of the event, DTA representatives will publicly and randomly select one number from zero to nine. Unduly delayed make-ups will be disqualified from participating in the promotion of this event. **Be sure to check your score promptly. For purposes of this promotion, no scores will be changed after the random number is drawn.**

Shooters with a score (shot in Event #10) ending in the number selected will be eligible to shoot-off. Example: If the number two (2) is drawn, all qualifying participants with a score of 92, 82, 72, 62, etc. are eligible to compete in the shoot-off.

A time and place for all qualifying shooters to register for the shoot-off will be announced over the PA system and/or posted on the scoreboard.

At the appropriate time and place, all shooters who have signed up to shoot-off will be called to the shoot-off line and should have their guns and shells ready. Shoot-off participants will be assigned to squads based upon yardage and at the discretion of the DTA shoot-off management.

Shoot-off participants will proceed to shoot two (2) targets at each post for a total of ten (10) targets from his/her ATA yardage (yardage shot during Event #10). All shoot-off rounds will consist of ten (10) target events. Shoot-off rounds will continue until a single winner has been determined.

Decisions made by the DTA shoot management regarding the above listed rules or other disputes shall be final. All decisions will be made in conformity with ATA rules where applicable.

HIGH ALL AROUND
Events 8, 9 and 10 (400 Targets)

ATA Resident Champion

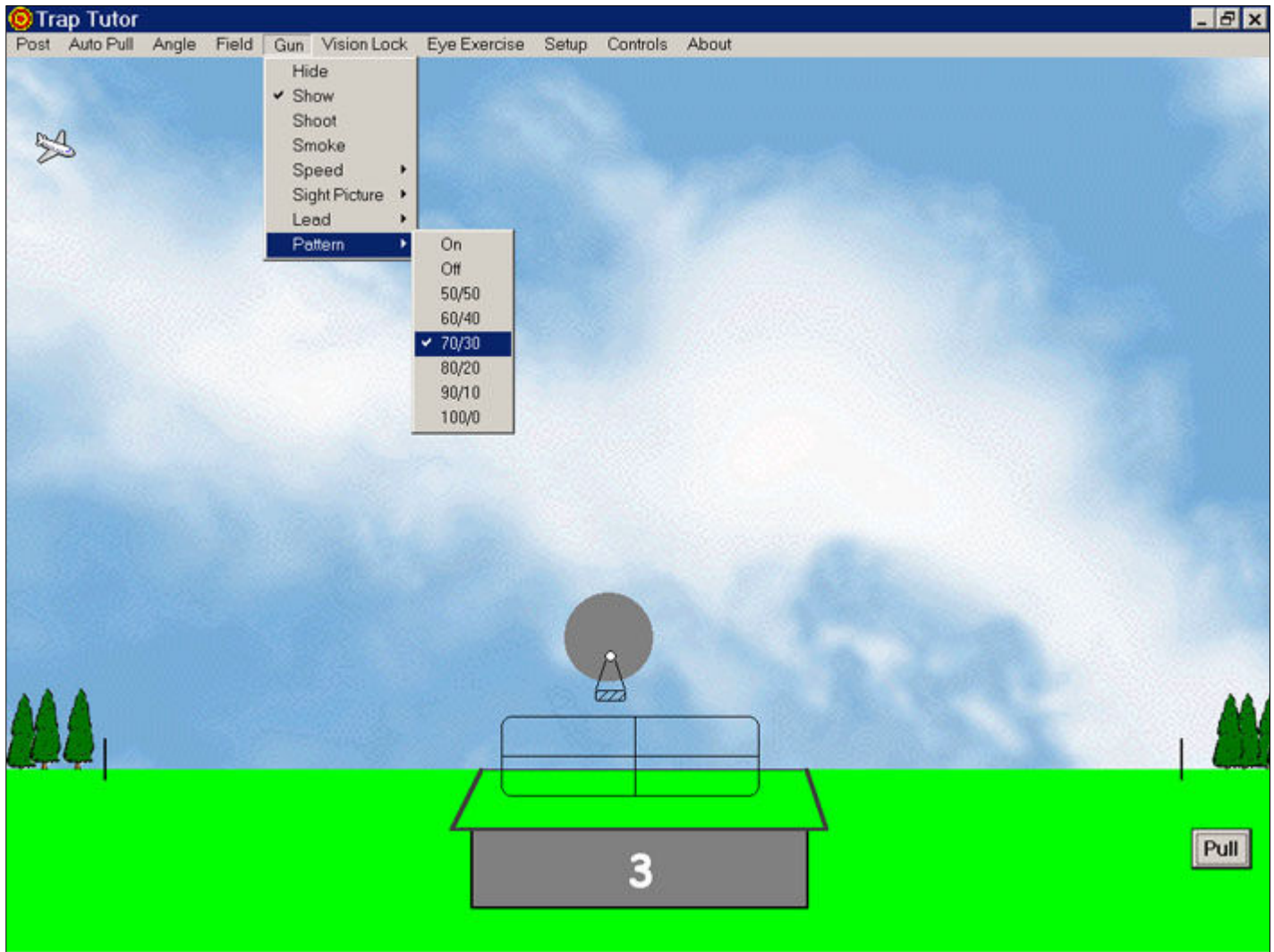
Open Champion
Open Champion each category
Lady, Veteran, Senior Veteran, Junior and Sub-junior

HIGH OVER ALL
Events 1 – 10 (1100 Targets)

Resident Champion
Resident Champion each class AA A B C D
Lady, Veteran, Senior Veteran, Junior and Sub-junior

Open Champion
Open Champion each class AA A B C D
Open Champion each category
Lady, Veteran, Senior Veteran, Junior and Sub-junior

TRAP TUTOR



TrapTutor is not a game. It is a trapshooting simulation program that can dramatically increase your scores. For more information and to purchase, please visit our website:

www.traptutor.com

DEER CROSSING FARM

**1297 Bunker Hill Road
Middletown, DE 19709**



BILL ALFREE
Proprietor
302-378-9828

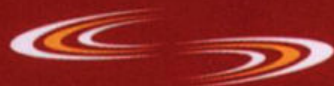
RESIDENTIAL COMMERCIAL INDUSTRIAL
SALES, SERVICE & INSTALLATION

DELAWARE VALLEY DOOR, INC.

Overhead & Rolling Steel Doors
Electric Operators

Newark, DE 19711

BOB BLANCO
(302) 366-8371



SHURELINE

ELECTRICAL

Karl Segner
Senior Project Manager

phone: 302.636.0295
Ext. 11

fax: 302.636.0207

cell: 302.420.3495

email: ksegner@shure-line.com

100 Artisan Drive
Smyrna, DE 19977

ShureLineElectrical.com

Smyrna Sporting Goods



Guns Bought, Sold, and Traded
Everything for the Hunter
Scopes Mounted

4 S. Main St.
Smyrna, DE 19977

(302) 653-7073
Brian Brown, *Proprietor*

SPALLCO
VEHICLE SALES
(302) 368-5950

Selling quality
RV's, for years
of enjoyment!

Visit www.spallcosales.com for all of our listings



www.spallcorentals.com

JOHN BURKE, D.D.S.

General Dentistry

CHRIS BARAN, D.M.D.

302-995-7128

Pike Creek Sports Medicine & Professional Center
3105 Limestone Road ~ Wilmington, DE 19808

**WHEN WE
SAY PULL,**



**WE MEAN
PULL !**

X-Ring Supply LLC

2201 Ogletown Road ~ Newark, DE 19711



We Buy, Sell, Trade & Transfer

**Tactical Firearms
Handgun Specialists
Dillon Reloading Supplies
Military Surplus**

www.x-ringsupply.com

Email: sales@x-ringsupply.com

**2010 Delaware State 2010
Trapshooting Championships**

May 28-31, 2010

**Millington Sportsmen's Association
Millington, MD**

***SHOOTER INFORMATION
SECTION***

2010 Delaware State Shoot

May 28-31, 2010

Daily Fees: ATA \$2.00 DTA \$2.00
Maryland Maintenance Fee: \$1.00 per 100 targets

All trap fields will be equipped with voice release and automatic Pat traps

Cashiered by
Spence Computer Cashiering
Manilus, NY

Presquadding available and recommended through
www.presquad.com

Vendor and Camping Information

Parking for vendors and campers will be assigned on a first call basis per shoot. Electric and water will be provided. Contact Ohmer Webb, Jr. at 410-604-1321 for reservations and/or additional information.

The 107th Annual Delaware State trapshooting Championships will be held on the grounds of the Millington Sportman's Association in Millington, Maryland. The Delaware Trapshooting Association (DTA) will have full responsibility for conducting this shoot.

All 2010 ATA and DTA rules and regulations will be enforced and will govern all points not otherwise provided for herein. The Officers of the DTA present at this shoot will make all decisions pertaining to the shoot and their decisions shall be binding.

The DTA reserves the right to refuse or reject any entry without explanation and/or to change the program or plan of shooting in case of weather, attendance or other factors make it advisable.

It is the shooter's responsibility to be ready and at the firing line when it is their squad's turn to shoot. The shoot will not be delayed to wait for any shooter.

Abusive behavior by anyone in attendance will result in immediate disqualification and/or the removal from the grounds.

CLASSIFICATIONS

All shooters will be classified (class and yardage) according to ATA regulations based on 2009 – 2010 averages, the last 500 targets registered in each discipline and known ability, which includes non-registered shooting and past performance.

Shooters who do not have an ATA target history card or do not have it up to date will be assigned class and/or yardage at the discretion of the Classification Committee. It is the shooter's responsibility to see that his/her target history card is up to date and accurate. Erroneous cards submitted may result in disqualification. Forfeiture of all trophies and monies and may be reported to the ATA for further disciplinary action.

New Shooters: New shooters will be assigned to the 20 yard line in the handicap events, Class B in the singles events and Class C in the doubles events. (new shooters are those that have joined the ATA in the 2010 target year and have less than 500 targets in each discipline).

Singles: Shooters who do not have at least 500, 16 yard targets registered upon their average card for 2010 which have been shot between September 1, 2009 through May 28, 2010 and a total of not less than 1000 registered 16 yard targets combined for the current and previous target year may be placed in Class A or higher at the discretion of the Classification Committee.

Doubles: Shooters who do not have at least 300 doubles targets registered upon the average card for 2010 which have been shot between September 1, 2009 through May 28, 2010 and a total of not less than 500 registered doubles targets combined for the current and previous target year may be placed in Class A or higher at the discretion of the Classification Committee.

Handicap: Shooters who do have at least 500 handicap targets registered upon their average card for 2009 which have been shot between September 1, 2009 through May 28, 2010 and a total of not less than 1000 registered handicap targets for the current and previous target year shall be handicapped as stated below:

Adult Male Shooters: Assigned 2 yards in addition to their normal yardage, subject to a 22 yard minimum and a 25 yard maximum.

Ladies, Juniors, Sub-Juniors and Veterans: Assigned 2 yards in addition to their normal yardage, subject to a 20 yard minimum and a 25 yard maximum.

Senior Veterans: No Penalty Yardage

Any shooter may elect to shoot for “**Targets Only**”, forfeiting all rights to trophies, options, etc., and will be exempt from penalty yardage.

CLASSES

16 Yards – 5 Classes

97% and over	AA
94% and under 97%	A
91% and under 94%	B
88% and under 91%	C
Under 88%	D

Doubles – 5 Classes

93% and over	AA
89% and under 93%	A
85% and under 89%	B
78% and under 85%	C
Under 78%	D

All trophy winners and ties, resident and open, in the 16 Yard or Doubles will be moved up a class. It is the shooter's responsibility to report to the Classification Committee for reassignment.

Trophy Eligibility

Only resident Delaware amateurs are eligible for the ATA Championship, Class and Yardage trophies. Open trophies are open to all amateurs regardless of place of residence.

Special Category Shooters

Refer to the 2010 ATA Rule Book

At all tournaments where All American points will be awarded in any event, shooters may declare only one category (i.e. Lady, Sub-Junior, Junior, Veteran, or Senior Veteran) Note: Chair shooters are exempt from this rule. Any shooter who is tied for event Champion may shoot-off/carry-over for the Championship trophy. If a shooter fails in the championship trophy shoot-off/carry-over and has declared a special category at the time of classification, the shooter can fall back to the declared category.

Any shooter who has declared a special category at the time of classification and whose score qualifies for any trophy in his/her declared category, will compete for the category trophy and not for place, class or yardage group. A special category shooter, whose score does not qualify for a trophy in his/her category, may compete for place, class or yardage group trophies. Once any declarations have been made either by a shooter or shoot management, the declaration is final and cannot be changed. There shall be no exception to this rule.

All Ladies, Sub-Juniors, Junior, Veterans, and Senior-Vets must declare their special category at the time of classification in any registered tournament if they wish to compete as a category shooter. Without such declaration, the contestant will not be allowed to compete for the applicable category trophy for the duration of the tournament. No contestant will be allowed to declare or change a special declaration after firing his/her first shot. There will be no exceptions to this rule.

Shoot – Off’s

Shoot-off’s will be held after the last scheduled event on the day it was shot (unless weather, time or other circumstances precludes this).

Any shooter leaving the grounds before a shoot-off, shall forfeit all rights to any trophies and monies involved, Trophies cannot be shipped and it is the shooter’s responsibility to pick up his/her trophy from a DTA representative before the shoot is concluded.

All trophies not claimed by shooters will be forfeited and become the property of DTA.

ATA Hall of Fame Contributor Lewis and Award

For Event 8, the Delaware State Singles Championship, we have joined with the Hall of Fame to offer a Hall of Fame Award and Lewis Option. The \$20 fee for this option is a 50% tax-deductible donation to the Hall of Fame and the other 50% will become part of a 3 Class Straight Lewis pool that will be split 50/30/20. All entrants will also be eligible for an oak and leather wall clock (Shamrock Leathers) that will be awarded to the high score in the option pool. (ties will be resolved by shoot management’s discretion)

Your donation will provide support to the maintenance of the HOF museum collection and to the many worthy projects undertaken by the HOF including the awarding of annual college scholarships to high school seniors. The DTA Board of Directors encourages your participation in this option as well as the Delaware HOF option being offered on Mondays Handicap.

The DE HOF option is a \$20 fee and represents a 50% donation to the Delaware Hall of Fame with the other 50% becoming a 3 Class Straight Lewis pool that will be split 50/30/20. All entrants will also be eligible for a flat of shells (provided by Gary Waalkes) that will be awarded to the high score in the option pool. (ties will be resolved by shoot management’s discretion)

2010 Delaware Resident Singles Champions

The ATA Resident Champion, Lady, Junior, Sub-Junior, Veteran and Senior Veteran of the 2010 Singles Championships will be eligible to compete in the Champion of Champion Race at the Grand American. Each Runner-up will be eligible to compete should the aforementioned winners decline to do so.

The Champions in each of the above mentioned categories must inform Delaware's ATA Delegate by July 1, 2010, of their intention to compete in the Champion of Champions race at the Grand. After that date, the Delegate will offer the Champion of Champions participation to the respective runner-up in each category.

Delaware State Team at the Grand

Shooters with the five highest scores in the Delaware State Singles Championship who attend the 2010 Grand and compete in the State Team Race shall constitute the Delaware State Team. It is the shooter's responsibility to contact Delaware's ATA Delegate at the Grand prior to the State Team Race. The shooter shall notify the Delegate that they are present, eligible for the Team and will be competing. Failure to notify the Delegate will result in the shooter's forfeiture of State Team membership.

Procedures for Drawing Squads

The window for squadding will open at approximately 7:30 A.M. daily. Shooters may squad for that day's events only and may squad for all the following events after 12:00 noon.

Entries

A shooter may make only one entry per event. Once the entry is made, the cashier will not accept any additional options or purse monies from the shooter. Positively no changes, withdrawals or refunds will be allowed after the entry has been made. It is the shooter's responsibility to see that the correct class, yardage and Special Category is plainly marked on his/her entry form. Any shooter shooting in an incorrect class or incorrect yardage will be disqualified.

Options and Payoff's

The Cashier will not be responsible for errors in scores after the options have been figured and posted on the scoreboard. It is the shooter's responsibility to check the scores posted on the scoreboard. Payoffs for the Friday, Saturday and Sunday events will be available on the following day. Payoffs for Monday's events will be mailed. A payoff sheet will be mailed to all shooters. Detailed records of the shoot will be retained for a period of 60 days following the shoot's completion. Any inquiries must be forwarded to the cashier before the end of that period.

2010 Delaware State Shoot Bank System

Events 1, 2, 3, 6, 7, 8 & 10, the DTA will utilize a 7 bank system, comprising 2 traps per bank. The number of banks necessary each day will be determined by the Shoot Management.

Shooters will shoot 50 targets per trap. Shooters in the singles and handicap events will shoot 5 shots per post with the squads going around twice on each trap. It is mandatory that all competitors take 50 shells to the line for all singles and handicap events. Non-compliance can result in disqualification and/or a return to the 10 targets per post for all remaining events.

A Bank Spillover System shall be in effect throughout the entire shoot program. Should any particular bank (or banks) have an excess of squads, those squads determined to be in excess shall be assigned to the next closest bank so as to equalize the banks and ensure a smoother and timelier event for all participants. The banks will be kept evenly balanced throughout the shoot as determined by the Shoot Management.

Event # 4 (Blue Hen Doubles) will be conducted on a dedicated Bank and may be shot anytime during that preliminary day (Friday, May 28th), however, no squads/shooters will start after 3:00 PM. Please schedule accordingly.

Events 5 and 9 (Doubles events): These events will be conducted on 14 Banks (1 trap per bank). Shooters will shoot their 100 target event on 1 trap (50 & 50), 10 targets per post (5 pair). 14 squads will be called to the line when these events begin. Please be aware of your squad and bank number.

Pre-Squadding Information

In 2010, PreSquad.com will be used for presquadding for the entire tournament. Shooters will simply log onto the site and follow the easy, step-by-step instructions. Shooters are encouraged to visit the site and become familiar with the procedure. There is a mock sign-up feature which will allow you to try the system and see how easy and convenient this method is.

This year, the DTA will waive any presquadding fees and we encourage shooters to use this feature so as to ease the lines and wait at the squadding windows. As in the past, the name & ATA number of each shooter squadded will be required. After squadding, a printout is provided with a confirmation number.

Pre-Squadding will be available from April 1, 2010 and will close in mid May 2010. More detailed information will be forthcoming on our website as the tournament draws near.

Governance

This program will absolutely govern the tournament. The ATA rules will govern all points not otherwise provided for in this program document.

Annual DTA Meeting

The annual meeting of the Delaware Trapshooting Association, Inc., will be held in the clubhouse on Saturday, May 29, 2010, following the conclusion of Event # 6.

This meeting will include any general business, the election of all DTA Officers/Directors, the ATA Delegate and Alternate Delegate.

2010 Delaware State Shoot Squad/Bank Assignments							
Bank 1	Bank 2	Bank 3	Bank 4	Bank 5	Bank 6	Practice	Bank 7
1	2	3	4	5	6	3 Traps	7
8	9	10	11	12	13		14
15	16	17	18	19	20		21
22	23	24	25	26	27		28
29	30	31	32	33	34		35
36	37	38	39	40	41		42
43	44	45	46	47	48		49
50	51	52	53	54	55		56
57	58	59	60	61	62		63

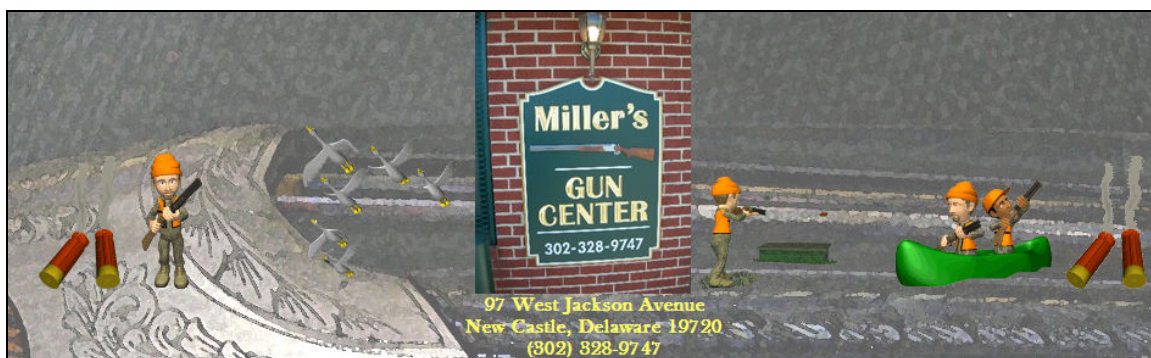
NOTE: actual layout Banks 1-7 from left to right facing trap houses

CLUBHOUSE

Miller's Gun Center

97 West Jackson Avenue
New Castle, DE 19720

302-328-9747



www.millersguns.com